



WOOD WOOL ACOUSTIC PANELS

DECORATIVE CEILINGS

WWW.GREENACOUSTICS.CO.ZA

SALES@GREENACOUSTICS.CO.ZA

Decorative / Acoustic panels

DECORATIVE CEILING

The durable and nature-friendly CEWOOD Decorative / Acoustic panels for indoor use are made from high-quality wood wool and cement. The fireproof material has great acoustic and thermal insulation capacities, and is perfectly suitable for the widest range of interior solutions.

Benefits

The panels are suitable for use in premises with a wide range of temperature and air humidity and offer an aesthetic value – original surface texture and unlimited choice of colours. Due to the natural ingredients, the panels ensure the pleasant micro-climate, typical for the wood-made premises.

Ecology – the material is produced in a nature-friendly way

Health – provides a human-friendly, favourable environment

Lifetime – withstands deformation, are not damaged by rodents and insects

Handiness – easy to transport and assemble

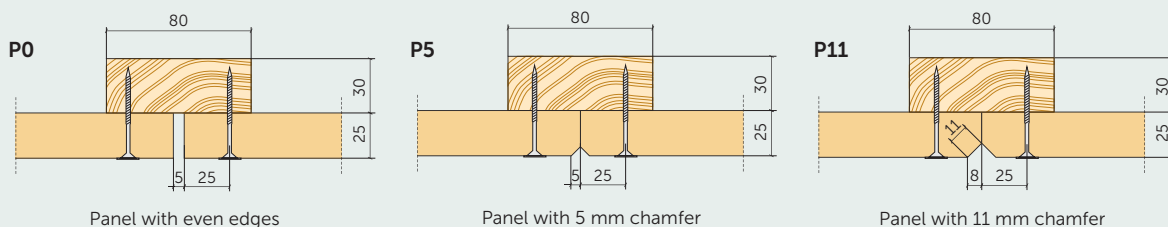
Insulation – excellent insulation properties

Acoustics – excellent sound insulating and absorbing properties

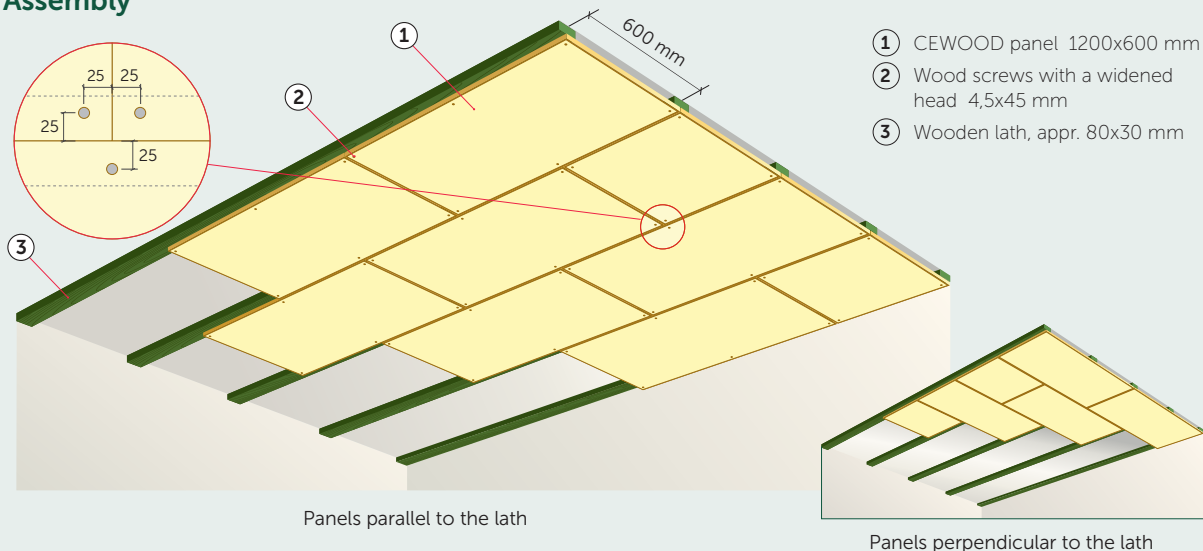
Technical data

Wood wool width	1,0 and 1,5 mm
Panel thickness	25 mm, soon available – 15, 35, 50 mm
Size	2400x600 mm, 1200x600 mm, 600x600 mm. Other sizes – upon request
Weight	10,5–11,5 kg/m ²
Thermal conductivity	$\lambda = 0,066 \text{ W/m}\cdot\text{K}$
Fire safety class	B-s1, dO
Colours	natural, white, black, grey, or painted according to RAL colour chart.

Profiles



Assembly



Important

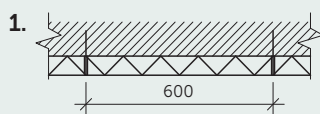
The panels can be fixed to wooden laths (80x30 mm) and metal (CD) profiles or other construction providing strength and load-bearing capacity.

The assembling is carried out using appropriate screws, size 4,5x45 mm (self-cutting screws for CD profiles, wood screws for wooden constructions).

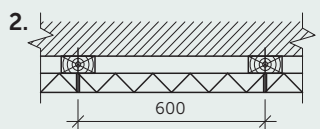
The construction steps are 600 mm, according to the panel width. The mounting should be carried out starting from the middle of room, gradually moving to the sides.

The screw mounting steps are >600 mm. In the corners the mounting should be 25 mm from the side of the panel.

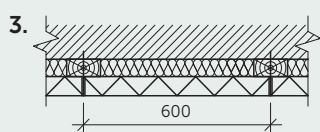
Variants of assembly



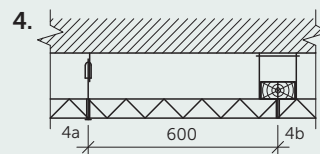
The panels are assembled to the ceiling or walls. Assembling to concrete or stone walls is done with plug nails (6 pcs/m²), to wood – wood screws with widened head or washer.



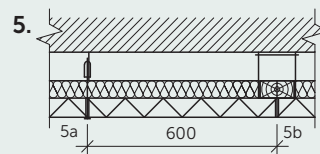
A wooden lathing (appr. 80x30 mm) or metal (CD) profile is constructed on the ceiling or wall, to which the CEWOOD panels are assembled.



3rd variant is the same as 2nd, but a layer of mineral wool is inserted between the laths above the panels.



A suspended ceiling system (4a; 5a) or laths construction (4b, 5b) is attached to the ceiling with the „quick“ suspension, then the CEWOOD panels are assembled.



5th variant is the same as 4th, but a layer of mineral wool is inserted over the CEWOOD panels.